

6TH GENERATION BMW eDRIVE TECHNOLOGY.

Martin Schuster

Vice President Battery Cell and Cell Module

Andreas Unverdorben

Vice President Powertrain & High-Voltage Battery Neue Klasse



OUR COMPETITIVE ADVANTAGE: THE ELECTRIC MOBILITY KNOW HOW WE HAVE BUILT UP SINCE 2008.

EXTENSIVE BATTERY EXPERTISE THROUGHOUT THE VALUE CHAIN AT BMW.



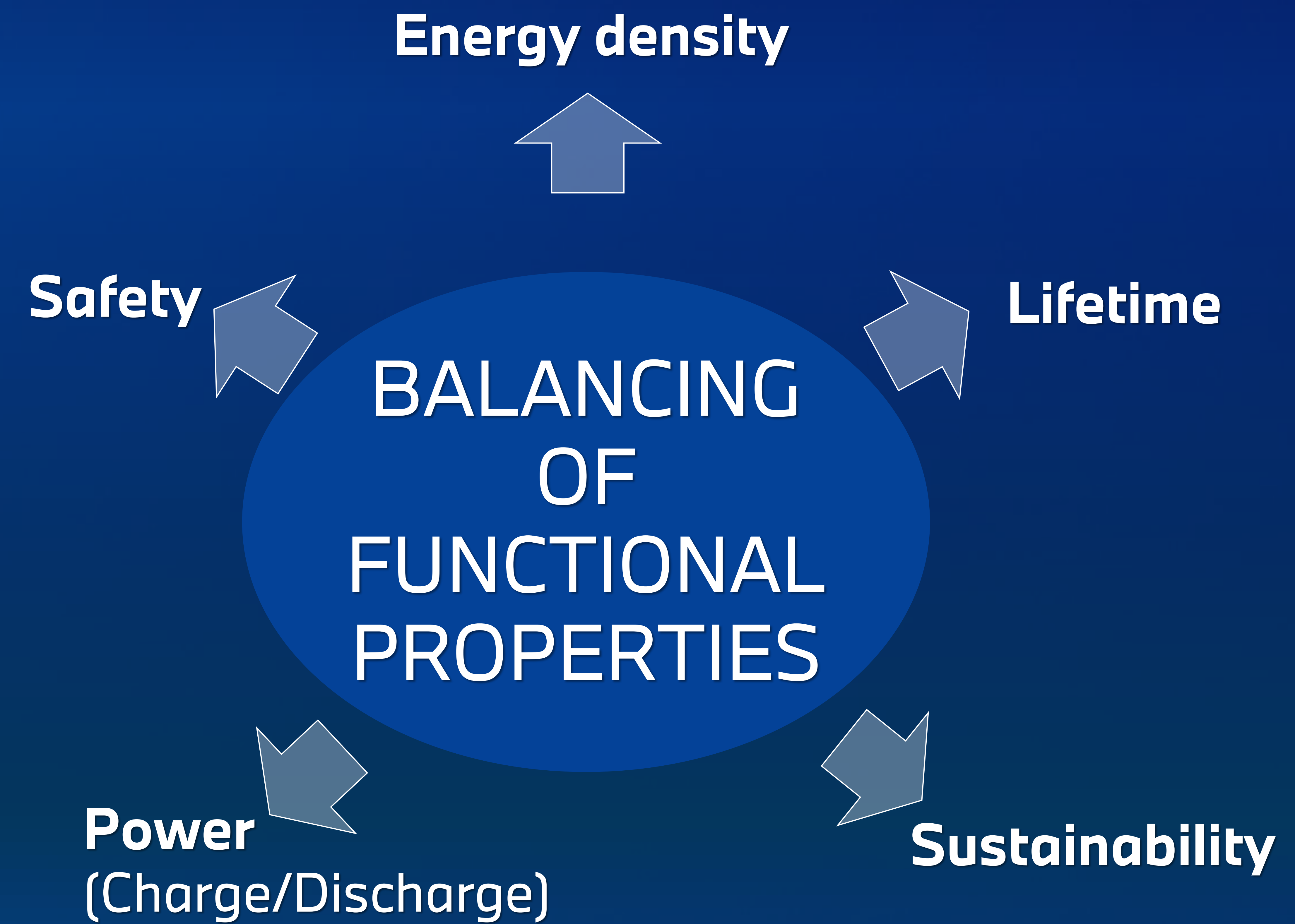
CELL-DEVELOPMENT: BATTERY CELL COMPETENCE CENTER

Cell manufacturing competence center (CMCC)

PACK-DESIGN: INHOUSE FROM HARDWARE TO SOFTWARE & INTEGRATION

Pilot lines for high-voltage batteries

Series production of high-voltage batteries



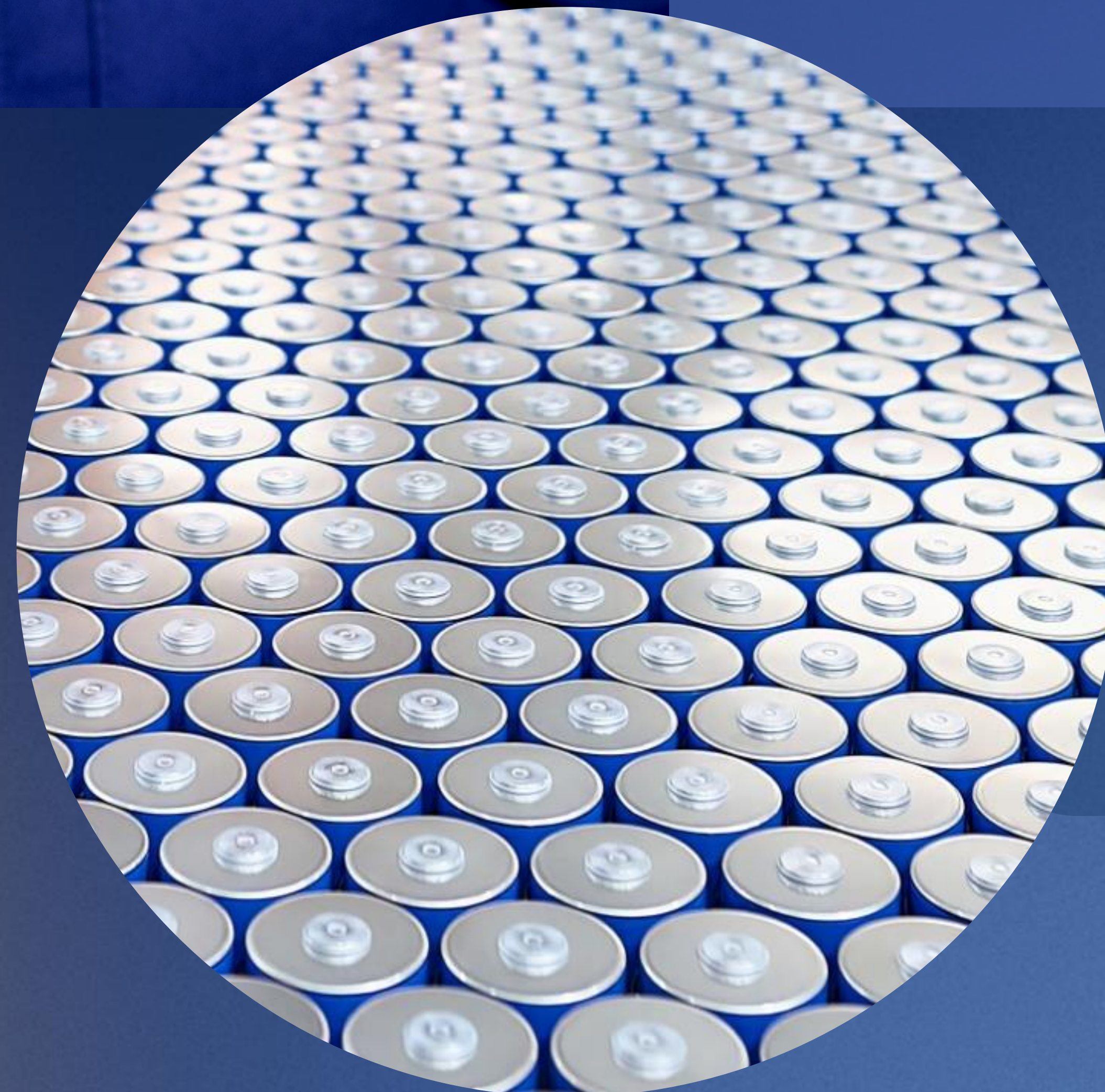
ALL NEW FOR THE 6TH GENERATION BMW eDRIVE TECHNOLOGY AND BRIMMING WITH BMW EXPERTISE: CYLINDRICAL BATTERY CELLS.



+20% ENERGY DENSITY ON CELL LEVEL
compared to our current prismatic battery cells (Gen5).

OPTIMUM FUNCTIONAL PROPERTIES
for complete product range.

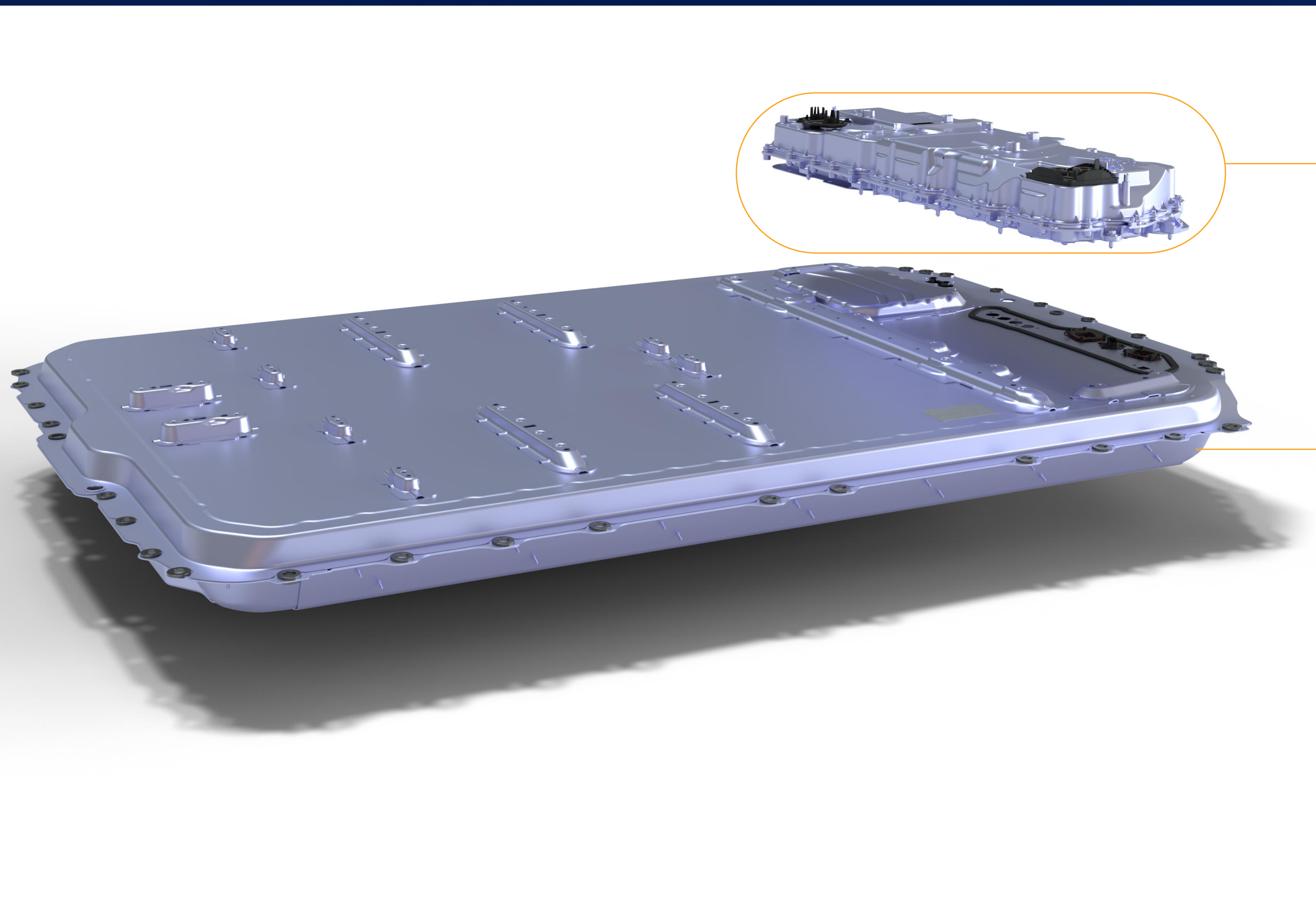
› The **optimum balance** for our customers worldwide in terms of **SAFETY, RANGE, CHARGING TIME & LONGEVITY.**



CELL-TO-PACK – No modules, no struts.

› **High energy density** on pack level & significant cost advantage.

CHARGE FASTER, DRIVE FURTHER: NEW HIGH-VOLTAGE BATTERY CONCEPT FOR GEN 6TH BMW eDRIVE TECHNOLOGY.



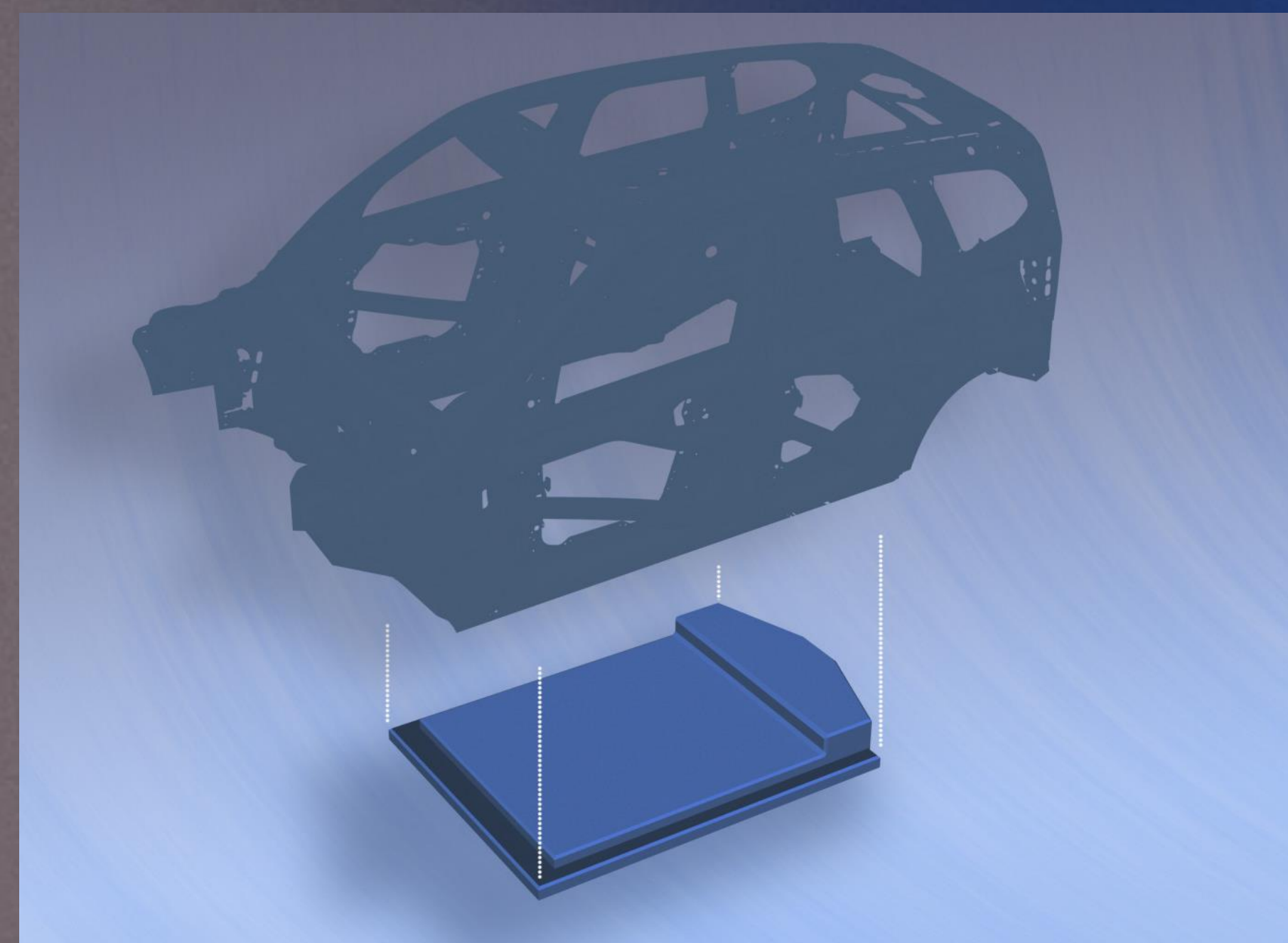
HIGH-VOLTAGE BATTERY CONTROL MODULE.

Intelligent interface for high-voltage and low-voltage power supply and data from the battery. It ensures efficient and safe battery operation.

HIGH-VOLTAGE BATTERY.

- Efficient and flat design
- One 800 V concept for the whole fully electric portfolio
- Energy content for the BMW iX3 50 xDrive: 108 kWh (UBE EU)

› The concept represents an expression of BMW's **extensive battery expertise** into the finest details.



PACK-TO-OPEN-BODY.

› High structural integration with optimum usability.

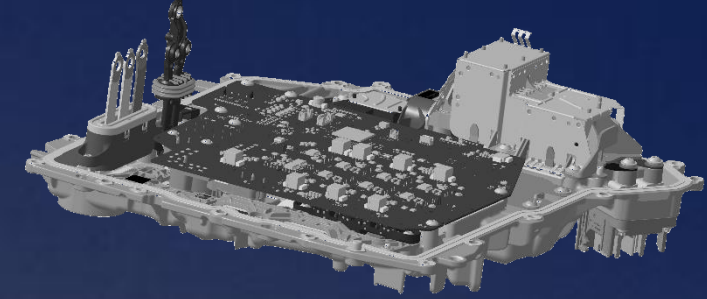
› Weight saving & positive effect on aerodynamics.

OUR ELECTRIC ENGINE PORTFOLIO FOR THE GEN6: TECHNOLOGY FLEXIBILITY – ADDING ASM TECHNOLOGY TO EESM.

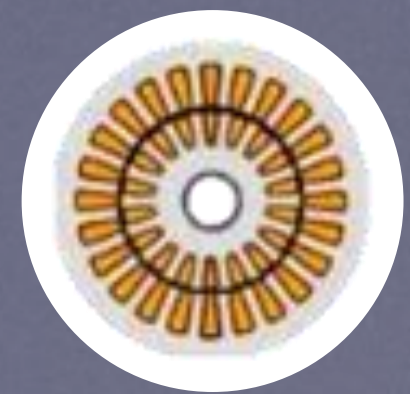
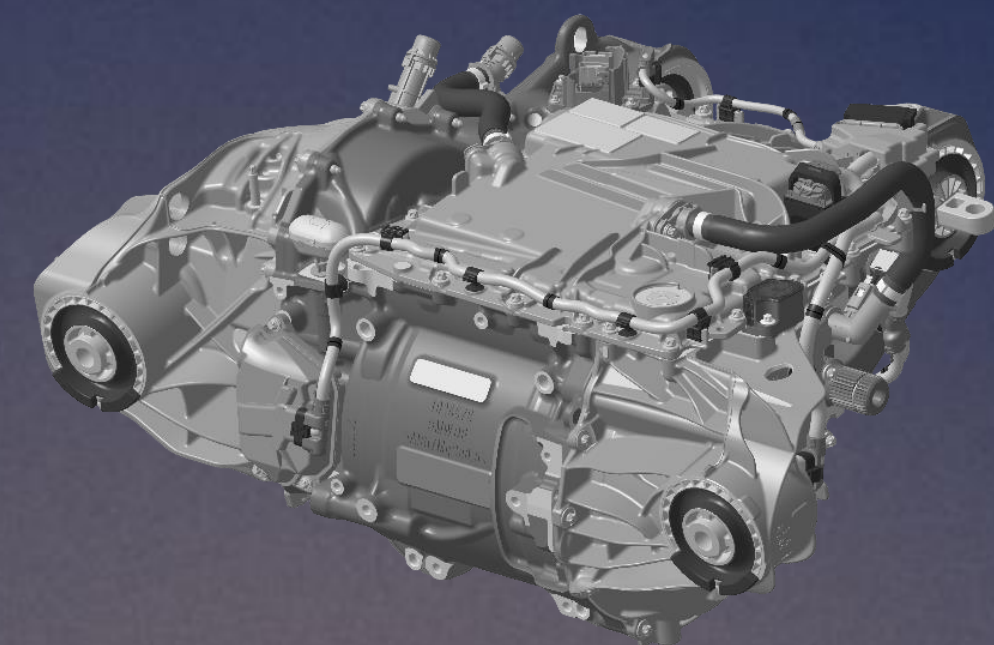


EESM

Externally Excited Synchronous Motor

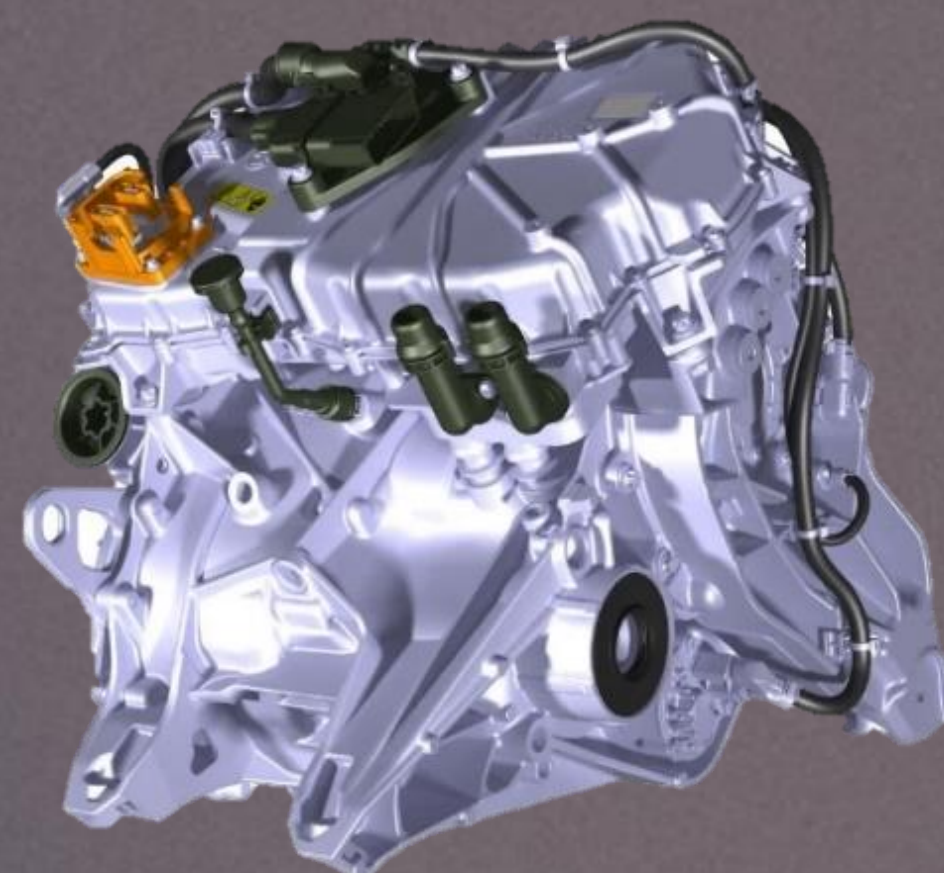


- Inverter with SiC technology
- High Efficiency
- Power at high speeds
- Sustainability



ASM

Asynchronous Motor



- Compact design
- Cost effectiveness
- Weight



- 40 %
losses

- 10 %
weight

- 20 %
manufacturing costs

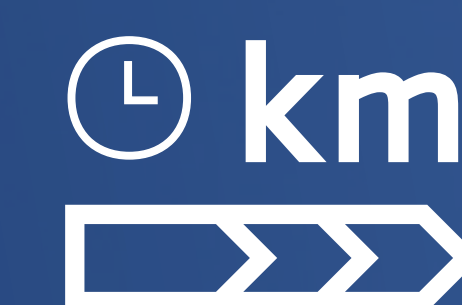
+ 330 km add. range WLTP compared to the predecessor BMW iX3 (2021)

85 km out of the electric engine efficiency

CHARGE FASTER, DRIVE FURTHER.



400 kW charging
power



> 350 km in 10
minutes



800 V Technology

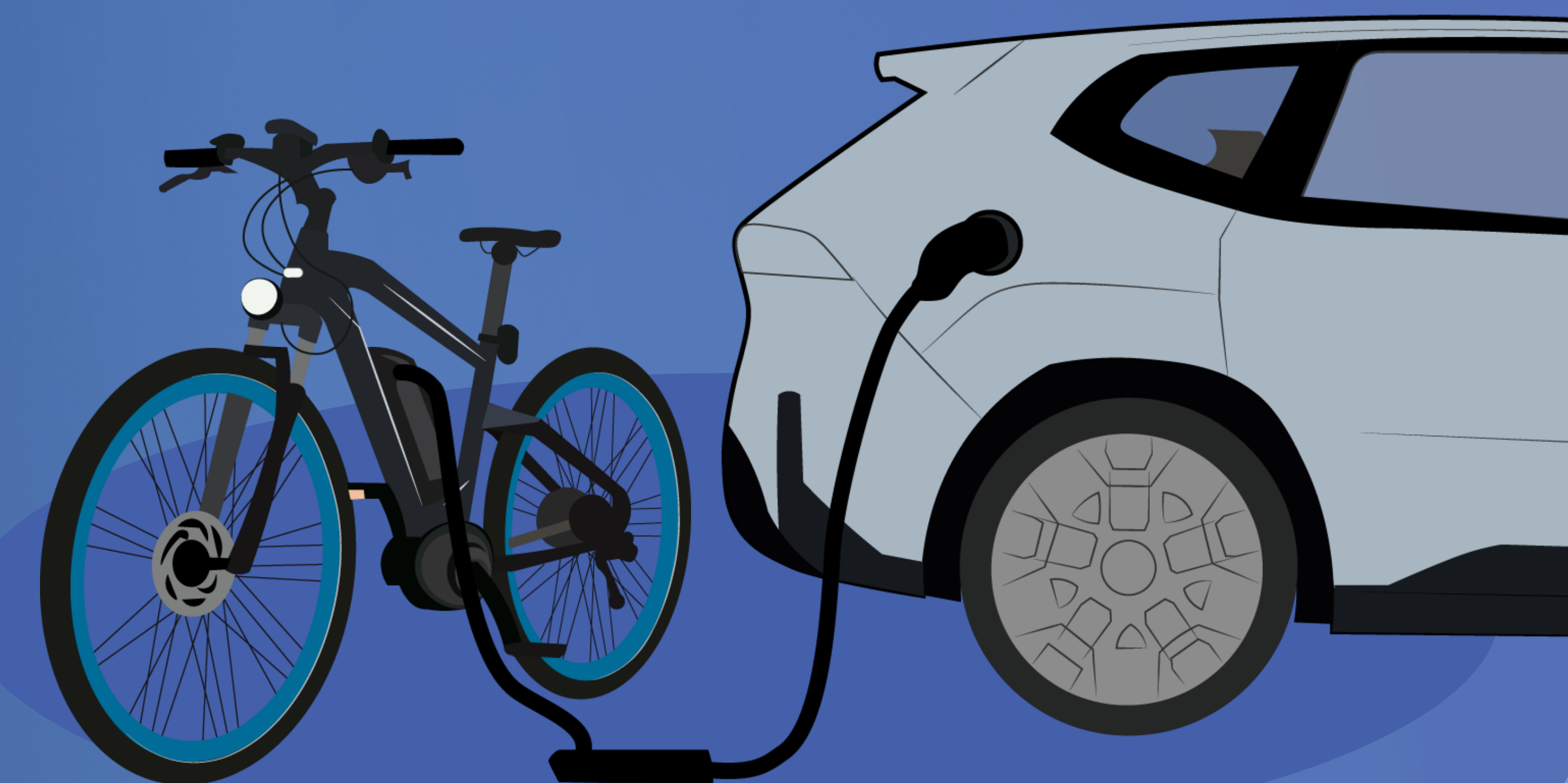
... charging at 400 V DC points will still be possible.

BIDIRECTIONAL CHARGING – to load, to home, to grid.

YOUR BMW AS
ENERGY STORAGE.



YOUR BMW AS
MOBILE POWER BANK.



GEN6: CHARGE FASTER, DRIVE FURTHER – AND THE BMW iX3 50 XDRIVE IS THE FIRST TO BENEFIT.

With improved
and new
technologies
for our electric
engine
portfolio,

... optimum
cells and a
cutting-edge
high-voltage
battery
concept,

... the Gen6
electrifies our
complete **fully
electric vehicle
line-up** –
across all
vehicle
segments.

Our **Gen6** delivers
a **significant leap**
in all customer
features.



400 kW
maximum charging



800 km
electric range (WLTP)



15,0 kWh/100 km
energy consumption

➤ - 20 % compared to the predecessor BMW iX3 (2021)